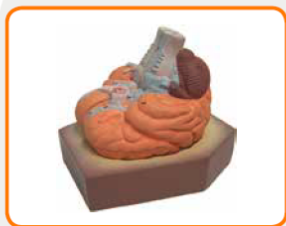




## Biology Models



**Anatomical Brain Model**

**Item code: Ba1**

- Natural cast
- Dissectible vertically in halves
- Mounted on a base



**Anatomical Ear Model**

**Item code: Ba2**

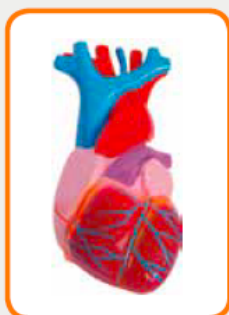
- Four part model
- Made from rigid plastic
- Enlarged 5 times
- Shows essential details of the ear



**Anatomical Eye Model**

**Item code: Ba3**

- Enlarged 4 times
- Cross section through the eye
- Showing sclera, choroid, retina optic nerve, vitreous body, lens, iris, ciliary body and cornea
- Retinal and choroidal vascular system also shown



**Anatomical Heart Model**

**Item code: Ba4**

- Enlarged
- Made from rigid plastic
- Dissectible into 3 parts
- Coloured and finished to show all features
- Mounted on a stand



**Anatomical Kidney Model**

**Item code: Ba5**

- Dissected into halves
- Shows all the main features



**Anatomical Skeleton Model**

**Item code: Ba6**

- Full size
- Fully articulated
- Skull is divisible into 3 parts
- Arms and legs are detachable
- Supplied with roller stand
- Height: 1750mm



### DNA Model

Item code: Bd1

#### A) DNA Structure

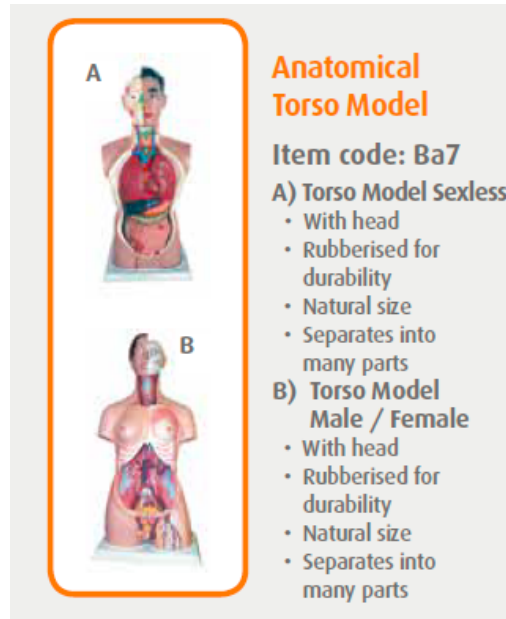
- Simplified representation of a short segment of double-stranded DNA
- Plastic
- Identified by colours
- Height:  $\pm 500\text{mm}$
- Containing 10 paired nucleotides
- Mounted on plastic base

#### B) DNA Structure Simulation Kit

- Containing 6 kinds of pieces representing different parts of DNA structure
- Designed to build double helix of DNA and to learn replication of DNA

#### C) DNA Activity Model

- Economy version
- Easy to understand replica of the "molecule of life"
- 12x12x46mm



### Anatomical Torso Model

Item code: Ba7

#### A) Torso Model Sexless

- With head
- Rubberised for durability
- Natural size
- Separates into many parts

#### B) Torso Model Male / Female

- With head
- Rubberised for durability
- Natural size
- Separates into many parts



### Animal Cell Model

Item code: Ba8

#### A) 3 Dimensional

- Shows form, structure and cell relationships of the cell
- Cross section mounted on plastic base
- Fitted with transparent removable sections
- Numbered and colour coded

#### B) Enlarged 20 000 X

- Also shows centrioles, lysosomes and fat vacuoles



### Flower Model

Item code: Bf1

- Full colour
- Shows petal, sepal, stem, pistil, stamen
- Dissected anther reveals pollen
- Cutaway pistil shows ovary, ovules
- Pollen tube to explain fertilization



### Meiosis Model

Item code: Bm1

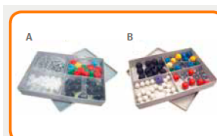
- Depicts process of cell division in sex cells
- Able to identify chromosomes, cytoplasm, chromatin, polar bodies and diploid cells
- Sperm/Ovum formations and fertilization
- High impact plastic
- Reinforced with foam



### Mitosis Model

Item code: Bm2

- Demonstrates cell division and identifies cell parts and structure
- 5 phases of mitosis
- Components of cell: cytoplasm, nucleus, nucleolus, chromatin threads centrioles, aster, spindle, chromosomes and centromere
- Reinforced with foam
- High impact plastic



### Molecular Model - Introductory

Item code: Bm3

- A) Introductory Set
  - Moulded plastic spheres
  - Flexible connectors
  - Representing atoms and bonds
  - Connectors have self-gripping ends
  - Spheres are coloured to represent the different elements
  - Connectors are two different lengths
  - Packed in a compartmented plastic tray
  - Spheres: 12 Carbon, 7 Oxygen, 2 Nitrogen, 1 Sulphur, 6 Chlorine, 20 Hydrogen
  - Links: 33 short grey, 12 long grey flexible, 29 white hydrogen connectors

- B) Introductory Set: Economy Model
  - Consisting of 54 balls of various colours and 24 legs
  - Spheres: 24 Hydrogen, 12 Carbon, 6 Oxygen, 6 Nitrogen, 6 Sulphur, 1 Chlorine, 1 Bromine, 1 Iodine
  - Links: 16 (Medium Bond); 8 (Long Bond)

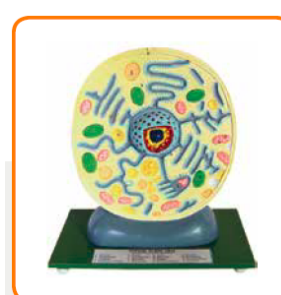


### Molecular Model - Organic & Inorganic

Item code: Bm4

- A) Organic and Inorganic set
  - Molecules ranging from simple ones to complex ones
  - Grey links of 2 lengths provided for single & double covalent bond
  - Mauve links provided for ionic, covalent & hydrogen bonds
  - Packed in compartmented plastic tray
  - Spheres: 6 Carbon, 22 Oxygen, 10 Nitrogen, 12 Sulphur, 8 Halogen, 14 Metal, 7 Phosphorus, 14 Hydrogen
  - Links: 50 medium grey and mauve, 36 long grey

- B) Organic and Inorganic Set: Economy Model
  - This set consists of 150 connecting lugs and 370 balls in different sizes and colours
  - With instruction manual



### Plant Cell Model (Import only)

Item code: Bp1

- Enlarged many times

## Skin Model

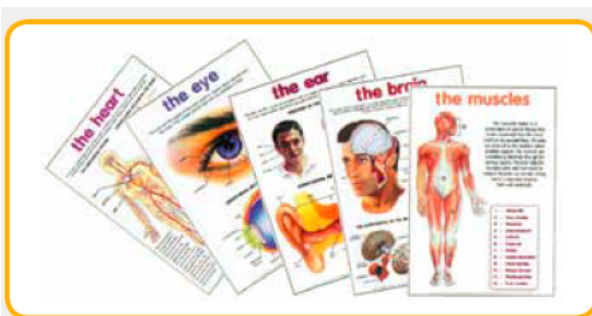
Item code: Bs1

### A) Cutaway View

- Shows skin layers, hair, follicles, sweat glands, nerve endings, blood vessels tissue
- Each feature is numbered and keyed
- High impact plastic
- Reinforced with foam

### B) Greatly enlarged cross sectional view of human skin

- Three layers
- Close-up view of a hair follicle, sweat gland, fatty tissue and more
- Front, side and back view
- Mounted on plastic base
- Not dissectible



## Anatomical Charts

Item code: Ca1

- Printed on artboard
- Laminated both sides for long lasting durability
- Large size for best impact 520 x 760mm

- |          |                      |
|----------|----------------------|
| 1) Heart | 8) Skeleton          |
| 2) Eye   | 9) Muscles           |
| 3) Ear   | 10) Digestive system |
| 4) Teeth | 11) Kidneys          |
| 5) Lungs | 12) Respiration      |
| 6) Skin  | 13) Spinal cord      |
| 7) Brain | 14) Torso            |